

Preliminary Summary Report of Serious or Near Serious CAL FIRE Injuries, Illnesses and Accidents



GREEN SHEET

Traffic Collision

May 30, 2017

Quint 90

17-CA-RRU-066690

17-CA-RRU-067013

California Southern Region

SUMMARY

On Tuesday, May 30, 2017, at approximately 5:50 PM, a CAL FIRE/Riverside County Fire Department aerial apparatus was responding to a residential structure fire. While enroute, the apparatus struck a civilian vehicle in a controlled intersection causing the civilian vehicle to become airborne and collide with two other vehicles. Four Department employees and one civilian were evaluated at local medical facilities and released.

CONDITIONS

Weather:

Temperature: 75.2° Fahrenheit
Relative Humidity: 47.5%
Winds: 5 MPH, NW
Visibility: Clear

Road Conditions: A dry, multiple lane asphalt surfaced road, with marked center dividers in all directions.

Slope: Flat

Make/Model of Equipment:

Vehicle #1 (V1): 2002 Ford Explorer

Vehicle #2 (V2): 2003 Spartan Chassis Gladiator Classic, Smeal 75' Quint
Quint 90 (Q90)

Vehicle #3 (V3): 2011 Chrysler 200

Vehicle #4 (V4): 2013 Honda CRV

SEQUENCE OF EVENTS

On Tuesday, May 30, 2017 at 5:46 PM, V2 was dispatched to a reported multifamily structure fire in the city of Menifee, CA. V2's route of travel was south on Perris Boulevard towards Nuevo Road.

V2, was staffed with one Fire Captain (FC1), one Fire Apparatus Engineer (FAE1), one Firefighter II and one Firefighter II/Paramedic.

As V2 traveled south on Perris Boulevard, approaching the Orange Avenue intersection, a red light caused them to reduce their speed. V2's traffic signal preemption device caused the signal to cycle green. V2, now with a green light, continued into the intersection. FC1 advised FAE1 that traffic to the right was "clear". FAE1 looked in both directions and confirmed that no vehicles were entering their route of travel. V2 proceeded through the intersection, when V1, traveling westbound on Orange Avenue, at approximately 50 mph, entered the intersection against a red light. FAE1 saw the vehicle at the last minute and attempted to immediately stop the apparatus. V3 and V4 were stopped in the #2 Lane of eastbound Orange Avenue at Perris Boulevard. V1 collided with V2 in the intersection causing V1 to become

airborne across the intersection and collided with V3 and V4. V1 rolled over V3 and came to rest against the front of V4.

FC1 immediately contacted the Perris Emergency Command Center and requested a response. All fire department members assessed each other, self-extricated, and rendered medical attention to all civilian parties involved.

INJURIES/DAMAGES

Injuries suffered by the four Department employees were limited to general soreness and muscle strains. All four were evaluated at local medical facilities and released back to full duty. One civilian, with minor injuries, was transported to an emergency room by ambulance for evaluation.

- **V1:** Major damage
- **V2:** Moderate damage
- **V3:** Moderate damage
- **V4:** Minor damage

SAFETY ISSUES FOR REVIEW

[CAL FIRE Policy 1732, Emergency Response Vehicle Operations Guidelines:](#)

- Travel at a safe speed to be able to stop your vehicle when traversing an intersection in the event another vehicle enters your right of way.
- Ensure a maximum speed of five miles per hour when driving through a controlled intersection.
- Consider completely stopping at intersections.

[CAL FIRE Policy 7732.4, Duty of Driver:](#)

- Consider the limitations of visual and audible warning devices when driving code three.
- The safety of the public must take precedence in all cases over the response speed of the emergency vehicle.
- Ensure good judgment is used during code three driving and otherwise.
- Maintain situational awareness and never anticipate your lights and sirens are seen or heard by other drivers.
- Know the capabilities of the apparatus you are operating especially during code three responses.

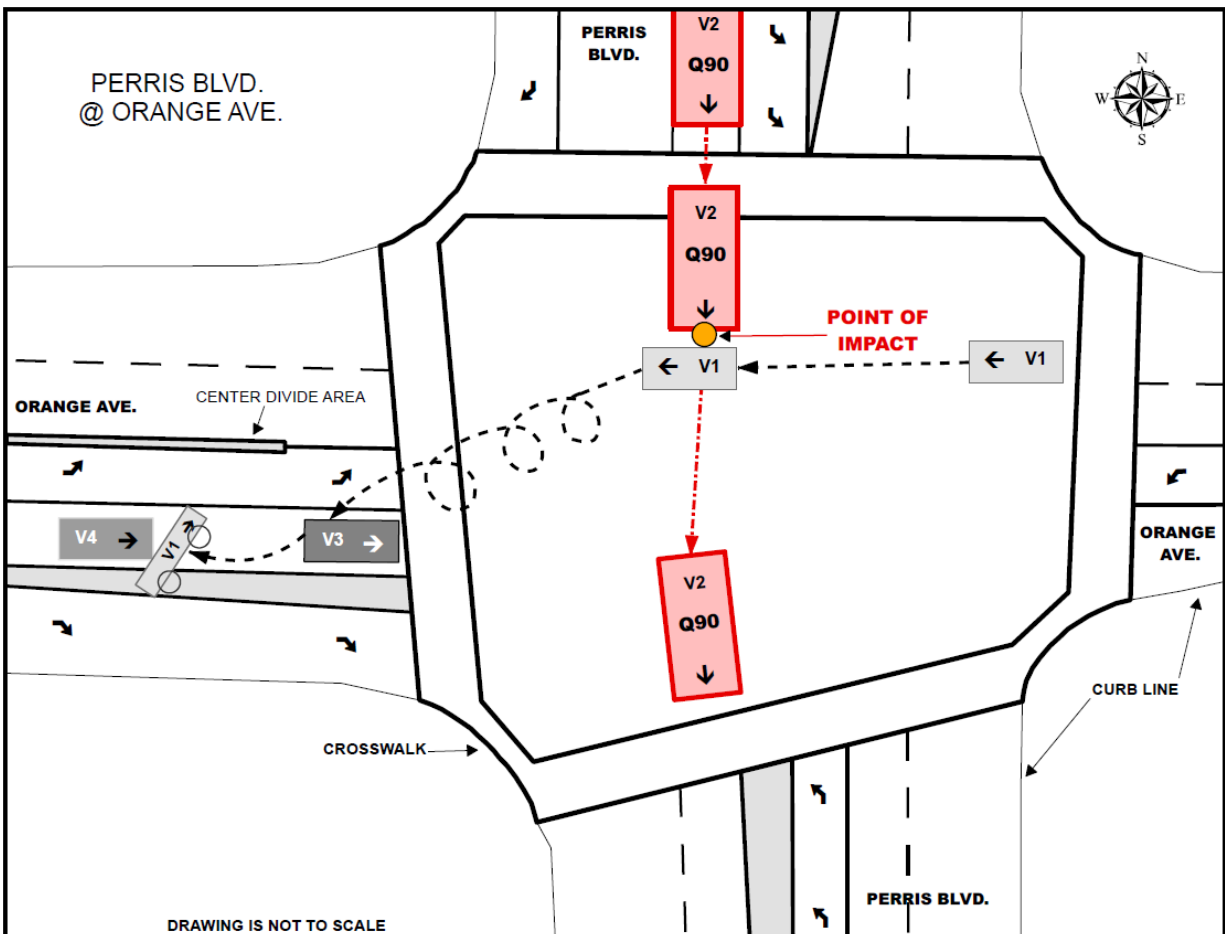
[DMV California Driver Handbook – Laws and Rules of the Road:](#)

- The greater the speed, the greater the stopping distance.

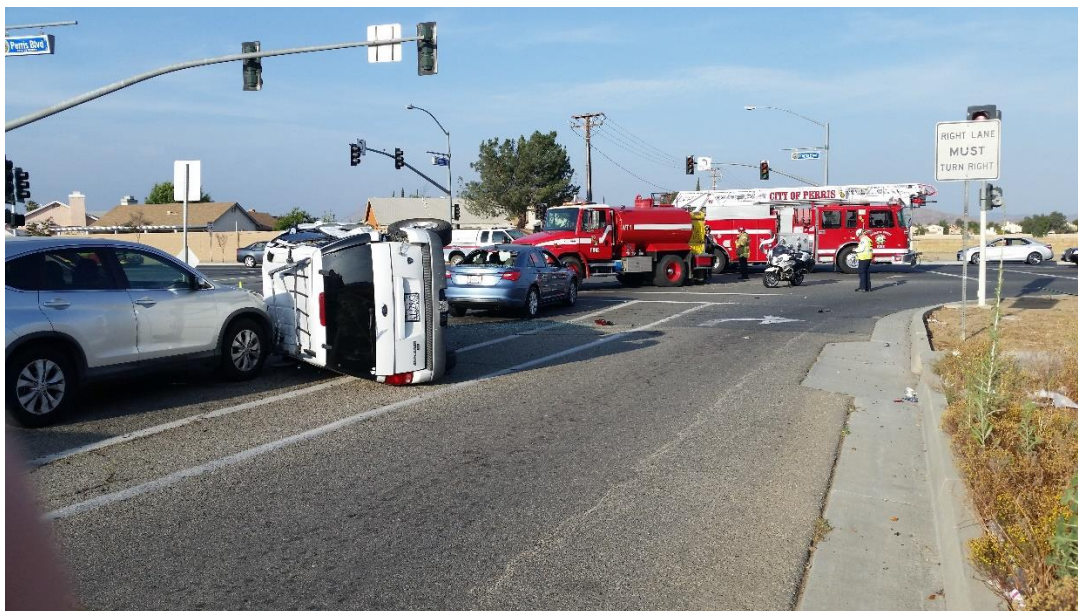
INCIDENTAL ISSUES/LESSONS LEARNED

- The operator's situational awareness prevented significant injuries to all vehicle occupants involved.

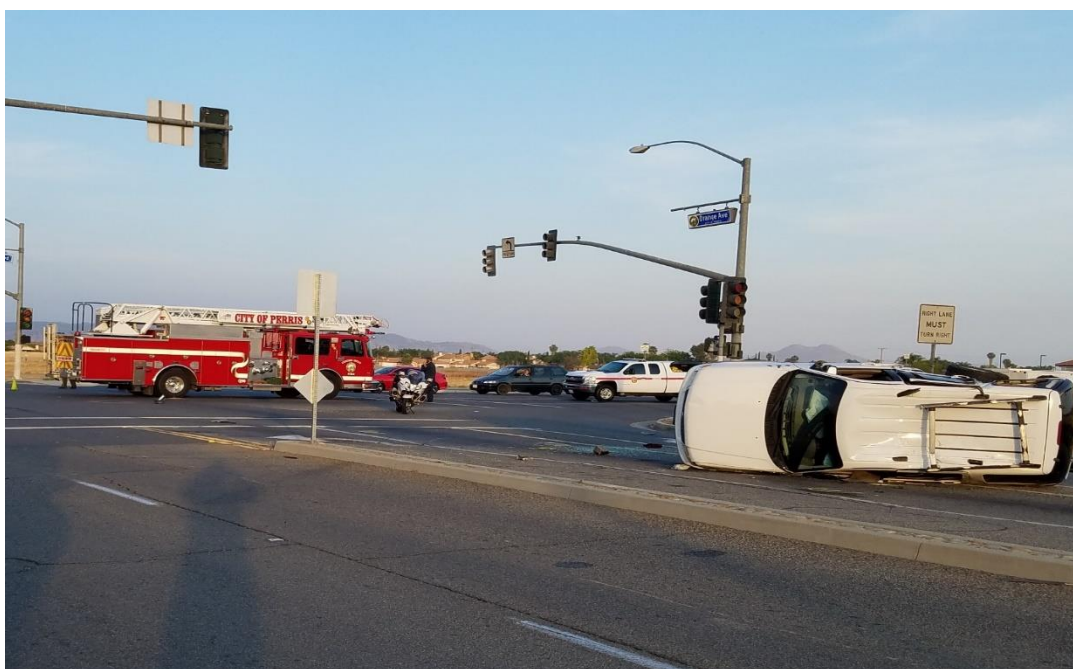
PHOTOS/SITE DIAGRAMS/MAPS



Map of Orange Ave. and Perris Blvd. Intersection.



View of intersection eastbound Orange Ave at Perris Blvd.



View of V1 on eastbound Orange Ave at Perris Blvd



View of the front end damage to V2